



# ABOUT HORNBLOWER

**1980**

## HORNBLOWER



In 1980, Hornblower was acquired by Terry MacRae. What started as a two-at, 114-passenger charter yacht company in Berkeley, California has since expanded to a 70+ vessel, multi-million dollar marine hospitality company. And although it has been more than thirty years, MacRae's mission hasn't changed: Deliver premier quality dining, entertainment and cruise experiences while emphasizing customer service, safety and teamwork. Today, Hornblower continues to expand, growing its operations throughout North America.

**1992**

## HORNBLOWER CRUISES AND EVENTS



For over 35 years, Hornblower Cruises & Events has been providing guests with unparalleled experiences on the water, including dining cruises, whale-watching cruises, sightseeing cruises, corporate events and weddings. It's the largest – and most popular – private passenger vessel company in North America, carrying over 16 million passengers on 150,000 voyages in 2012 alone. Hornblower Cruises & Events operates in: San Francisco, Sacramento, Marina Del Rey, Newport Beach, San Diego and New York.

**1994**

## HORNBLOWER MARITIME SERVICES



Since 1994, Hornblower Maritime Services was created specifically to help government agencies explore, start and manage ferry transportation systems. There are operations in many US and foreign locations including, California, Washington, Florida, Delaware, Connecticut, Oklahoma, Trinidad, Tobago, Okinawa, etc. HMS focuses exclusively on the operation of ferry vessels and has developed a reputation throughout the maritime industry as a premium operator with extraordinary capabilities. HMS has operated ferry vessels every day of the year, for over 20 years. HMS is unparalleled in the world and is considered the leader in setting up ferry transportation systems for municipalities.

**2006**

## HORNBLOWER ALCATRAZ CRUISES



In 2006, Alcatraz Cruises was awarded a U.S. National Park Service concession for the exclusive operation of boat tours to the infamous Alcatraz Island, California. Today, Alcatraz Cruises provides ticketing and transportation to more than 1.5 million visitors to the island each year. Each excursion is accompanied by an award-winning audio tour of the Cellhouse and a dramatic retelling of the most famous Alcatraz escape attempts.

It operates year-round. Guests of Alcatraz Cruises also have the luxury of sightseeing aboard the Hornblower Hybrid – the first hybrid vessel in the United States. The 64-metre-long catamaran runs entirely on a combination of solar power, wind power, and low-emission diesel fuel.



# ABOUT HORNBLOWER

**2008**

## STATUE CRUISES



Shortly after the launch of Alcatraz Cruises, Hornblower was awarded a second U.S. National Park Service award and took over the exclusive ferry service to the Statue of Liberty National Monument & Ellis Island Memorial Museum in New York. Visitors are offered the once in a lifetime experience of traveling back in time to experience Ellis Island just as millions of Americans did so long ago.

**2009**

## LIBERTY LANDING FERRY



In 2009, Liberty Landing Ferry began operating ferries from New Jersey to New York City. It is a point to- point passenger ferry service in the New York Harbor providing transportation across the Hudson River. It is a fast, affordable, efficient alternative across the Hudson, connecting residents of New Jersey with Manhattan.

**2012**

## HORNBLOWER CRUISES AND EVENTS NEW YORK



Since it's launch in 2012, Hornblower New York has prided itself on delivering premier dining cruises and private event charters out of Pier 40 in the West Village. Due to its increasing popularity and widespread demand, in March 2014, Hornblower New York expanded its service offerings to Pier 15 at the South Street Seaport, where it operates happy hour and nighttime entertainment cruises, as well as daily New York sightseeing tours.

**2014**

## HORNBLOWER NIAGARA CRUISES



In 2012, Hornblower Niagara Cruises won a highly competitive bidding process and was awarded the exclusive Canadian contract by the Niagara Parks Commission to operate boat tours to Niagara Falls in the Niagara George.

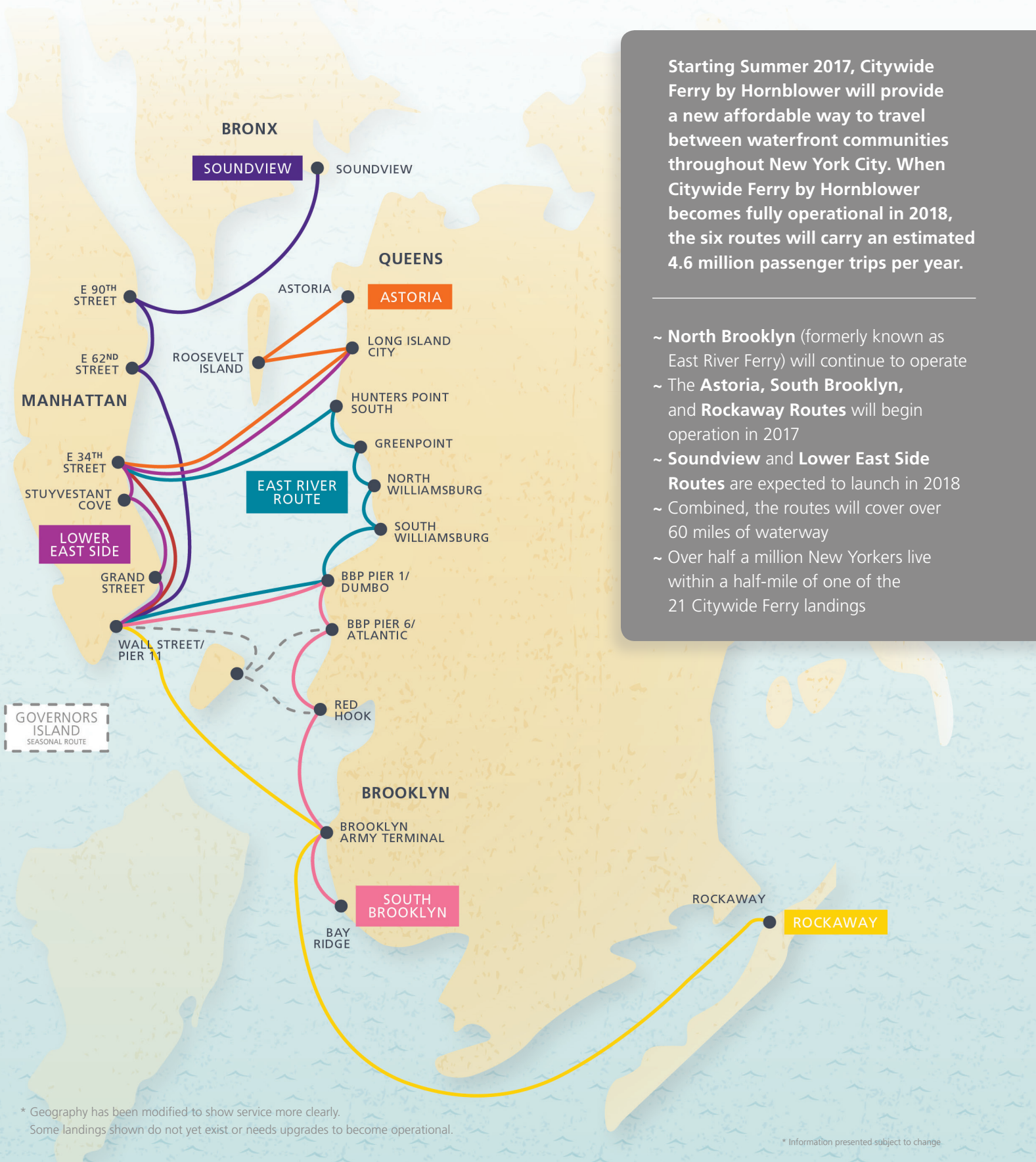
Guests cruise aboard all new, state-of-the-art catamaran with 360 degree tiered viewing decks for unobstructed views and sheltered viewing areas for a full-but dry immersion in the awe of the mighty Niagara Falls. Offering iconic daytime boat tours and all new evening Firework and Illumination cruises, Hornblower Niagara Cruises is offering guests a whole new way to experience Niagara Falls.

**2016**

## CITYWIDE FERRY BY HORNBLOWER



More recently, Hornblower was awarded by the New York City Economic Development Corporation the exclusive Citywide Ferry Service contract. Hornblower will connect the 5 boroughs of New York City via water for the first time in nearly 100 years. With the plan of carrying over 4.6 million riders on 19 vessels and delivering service to 22 different landing locations, Hornblower will modernize and help expand how and where New Yorker's choose to Work. Live. Play.



Starting Summer 2017, Citywide Ferry by Hornblower will provide a new affordable way to travel between waterfront communities throughout New York City. When Citywide Ferry by Hornblower becomes fully operational in 2018, the six routes will carry an estimated 4.6 million passenger trips per year.

- ~ **North Brooklyn** (formerly known as East River Ferry) will continue to operate
- ~ The **Astoria, South Brooklyn,** and **Rockaway Routes** will begin operation in 2017
- ~ **Soundview** and **Lower East Side Routes** are expected to launch in 2018
- ~ Combined, the routes will cover over 60 miles of waterway
- ~ Over half a million New Yorkers live within a half-mile of one of the 21 Citywide Ferry landings

\* Geography has been modified to show service more clearly. Some landings shown do not yet exist or needs upgrades to become operational.

\* Information presented subject to change.



# CITYWIDE FERRY QUICK FACTS

- ~ The ticket price matches the MTA fare at \$2.75
- ~ Free transfers within the ferry routes
- ~ Each vessel can hold 150 passengers
- ~ Wi-Fi is available on each vessel
- \*Implementation may vary on each route
- ~ All Vessels are ADA and NYC Local Law 68 2005 compliant
- ~ Estimated 4.6 million passenger trips per year
- ~ A more efficient hull design increases fuel efficiency
- ~ Monthly and Annual Passes are available
- ~ Purchase Tickets at: Mobile App, Website, Ticketing Vending Machine



## ABOUT CITYWIDE FERRY

The New York City Economic Development Corporation (NYCEDC) is working with the Office of Mayor de Blasio to launch Citywide Ferry. The Hornblower Company has been selected as the operator of the Citywide Ferry Service. Citywide Ferry will further the Mayor's goals of: providing affordable and convenient transit for communities with limited transportation options; supporting growing neighborhoods and increasing the resiliency and redundancy of our city's transportation network. When the Citywide Ferry Service is fully operational in 2018, the six routes will carry an estimated 4.6 million passenger trips per year. Building on several years of ferry planning and operations experience, NYCEDC is building ten new ferry landings, renovating six other, and contracting with Hornblower to run the service.

SUMMER 2017

## ROCKAWAY FERRY



59 MINUTES TRAVEL TIME END-TO-END



The **Rockaway Route** of the Citywide Ferry will provide a key transit link between the Rockaways, Sunset Park, and Lower Manhattan, while connecting New Yorkers to our city's beaches.

\* Geography has been modified to show service more clearly. Some landings shown do not yet exist or needs upgrades to become operational.

SUMMER 2017

## ASTORIA FERRY



43 MINUTES TRAVEL TIME END-TO-END



The **Astoria Route** of the Citywide Ferry will connect the growing residential and business communities of Western Queens; Roosevelt Island, including the new Cornell Tech campus; and residents and job centers in Midtown and the Financial District.

SUMMER 2017

## SOUTH BROOKLYN FERRY



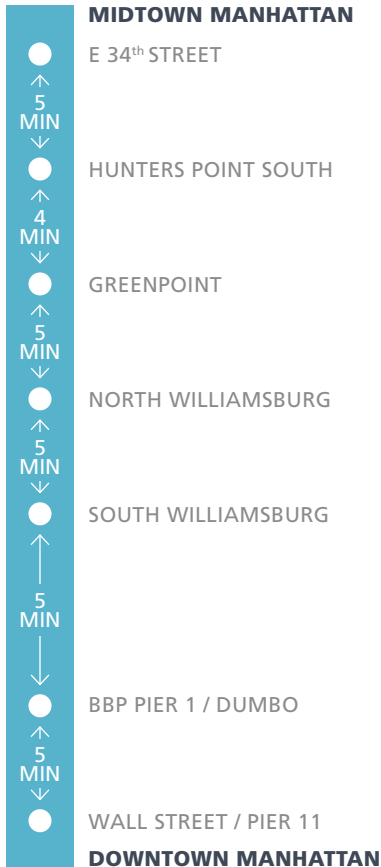
43 MINUTES TRAVEL TIME END-TO-END



The **South Brooklyn Route** of the Citywide Ferry will connect South Brooklyn's residential communities, waterfront parks, and innovative industries to residents and job centers in Midtown and the Financial District.

2017

## EAST RIVER ROUTE



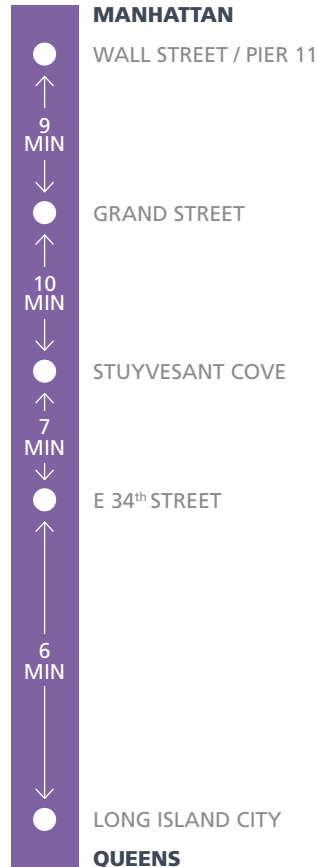
29 MINUTES TRAVEL TIME END-TO-END



The **North Brooklyn Route** (Formerly known as East River Ferry) features frequent, reliable service that connects Manhattan with various destinations in Brooklyn, Queens and seasonally on Governor's Island.

SUMMER 2018

## LOWER EAST SIDE FERRY



32 MINUTES TRAVEL TIME END-TO-END



The **Lower East Side Route** of the Citywide Ferry will connect residents with job centers in Midtown, the Financial District, and Long Island City.

SUMMER 2018

## SOUNDVIEW FERRY



43 MINUTES TRAVEL TIME END-TO-END



The **Soundview Route** of the Citywide Ferry will connect communities in the Bronx and the Upper East Side with job centers in Lower Manhattan.

\* Geography has been modified to show service more clearly. Some landings shown do not yet exist or needs upgrades to become operational.

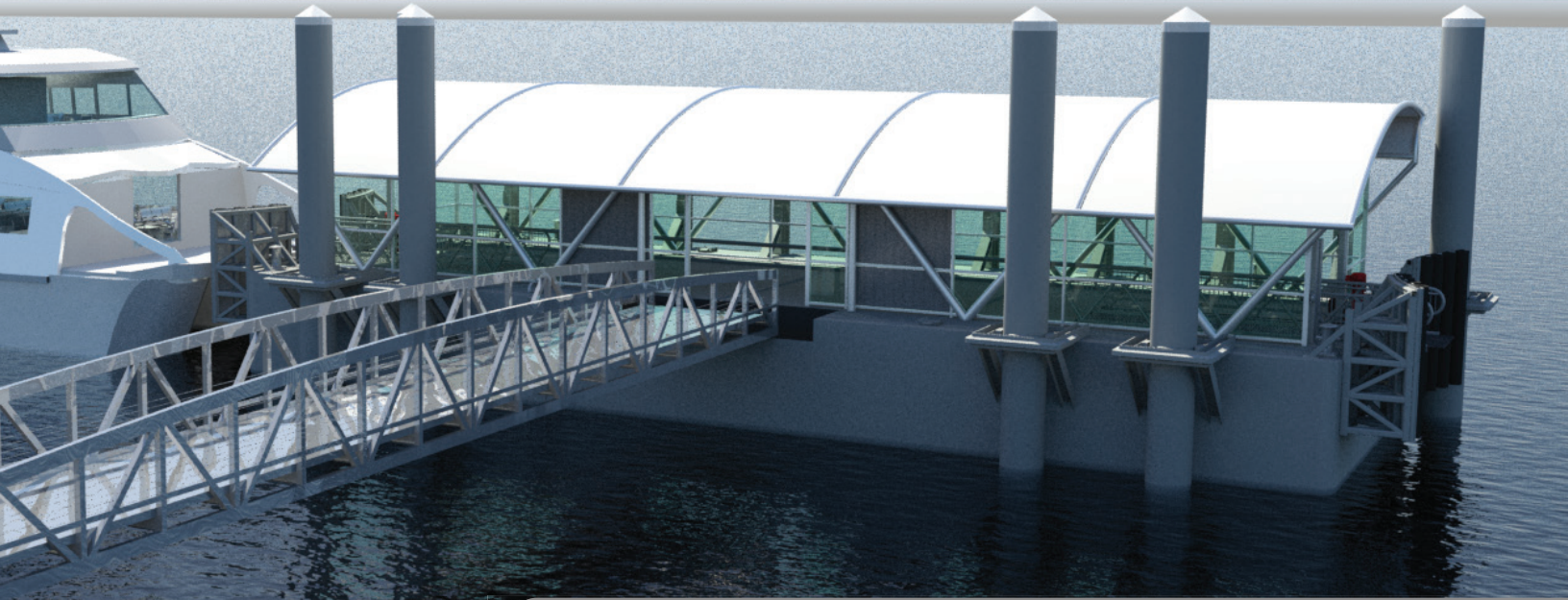


- ~ 19 vessels are currently being built at Horizon Shipbuilding, Inc. and Metal Shark
- ~ The vessels are made with aluminum, a light, safe and fuel-efficient material
- ~ Hull design is specifically designed to limit wakes, providing a gentle ride
- ~ All vessels have ultra efficient engines with lower emissions

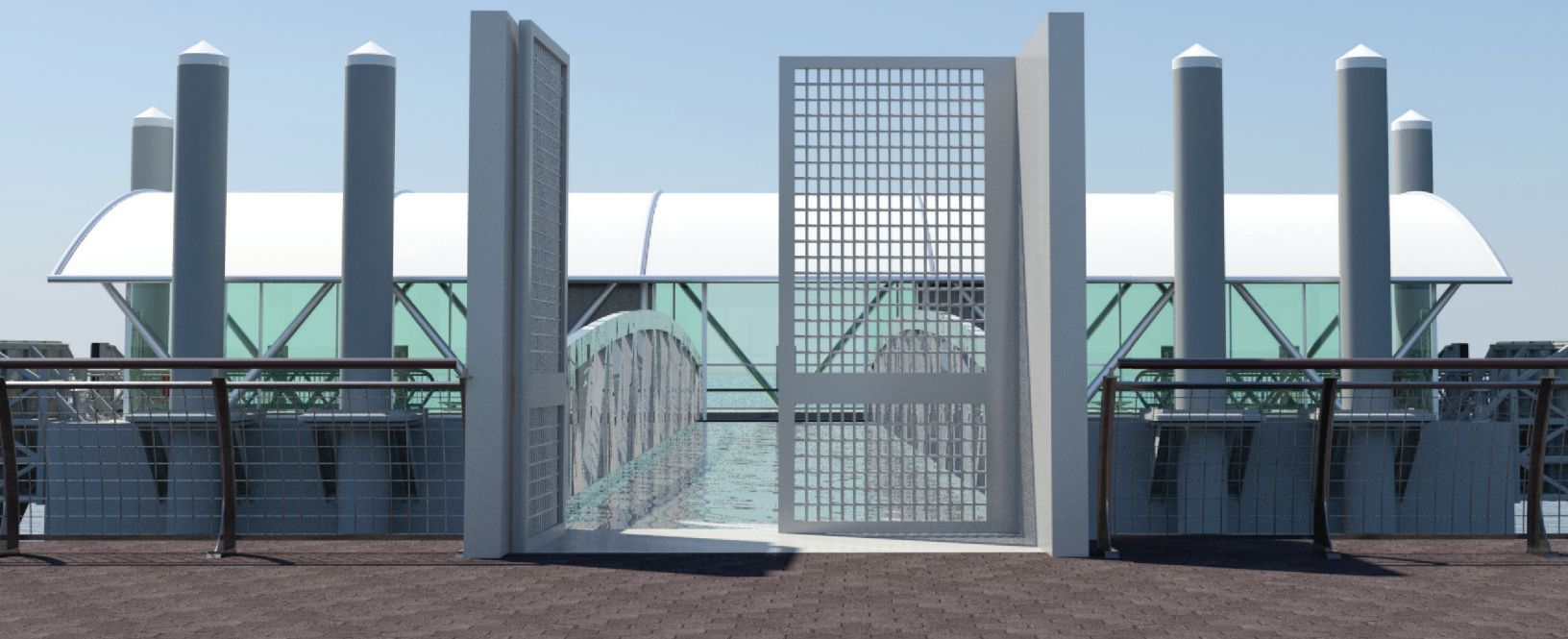
- ~ Each vessel can hold 150 passengers
- ~ Estimated 4.6 million passenger trips per year
- ~ All Vessels will be equipped with Wi-Fi
- \*Implementation may vary by route
- ~ All vessels are ADA and LL68 compliant
- ~ Concessions will be available on the boats
- ~ All vessels have EPA Tier 3 Engines which is best in vessel class
- ~ Bike, stroller, and wheelchair space are available on all vessels



# CITYWIDE FERRY LANDINGS



- ~ All landings are ADA and LL68 compliant
- ~ 10 new landings are built and open in 2017
- ~ Landings have low profiles to preserve views
- ~ Barges for the ferry landing are made on Staten Island
- ~ Landings are equipped with canopies and wind screens and radiant heaters to shelter from seasonal weather conditions
- ~ Landings are designed by McLaren Engineering Group and will be 35 feet wide and 90 feet long to provide shelter from seasonal weather





# CITYWIDE FERRY FACTS



**\$2.75**

PER RIDE WITH FREE  
IN-SERVICE TRANSFERS



**\$1.00**

PER BICYCLE, TO BE PLACED  
IN ON-BOARD BIKE RACKS



**2017**

- NORTH BROOKLYN  
FORMERLY KNOWN AS EAST RIVER FERRY
- SOUTH BROOKLYN
- ASTORIA
- ROCKAWAY

ROUTES SET TO  
LAUNCH IN SUMMER 2017



**2018**

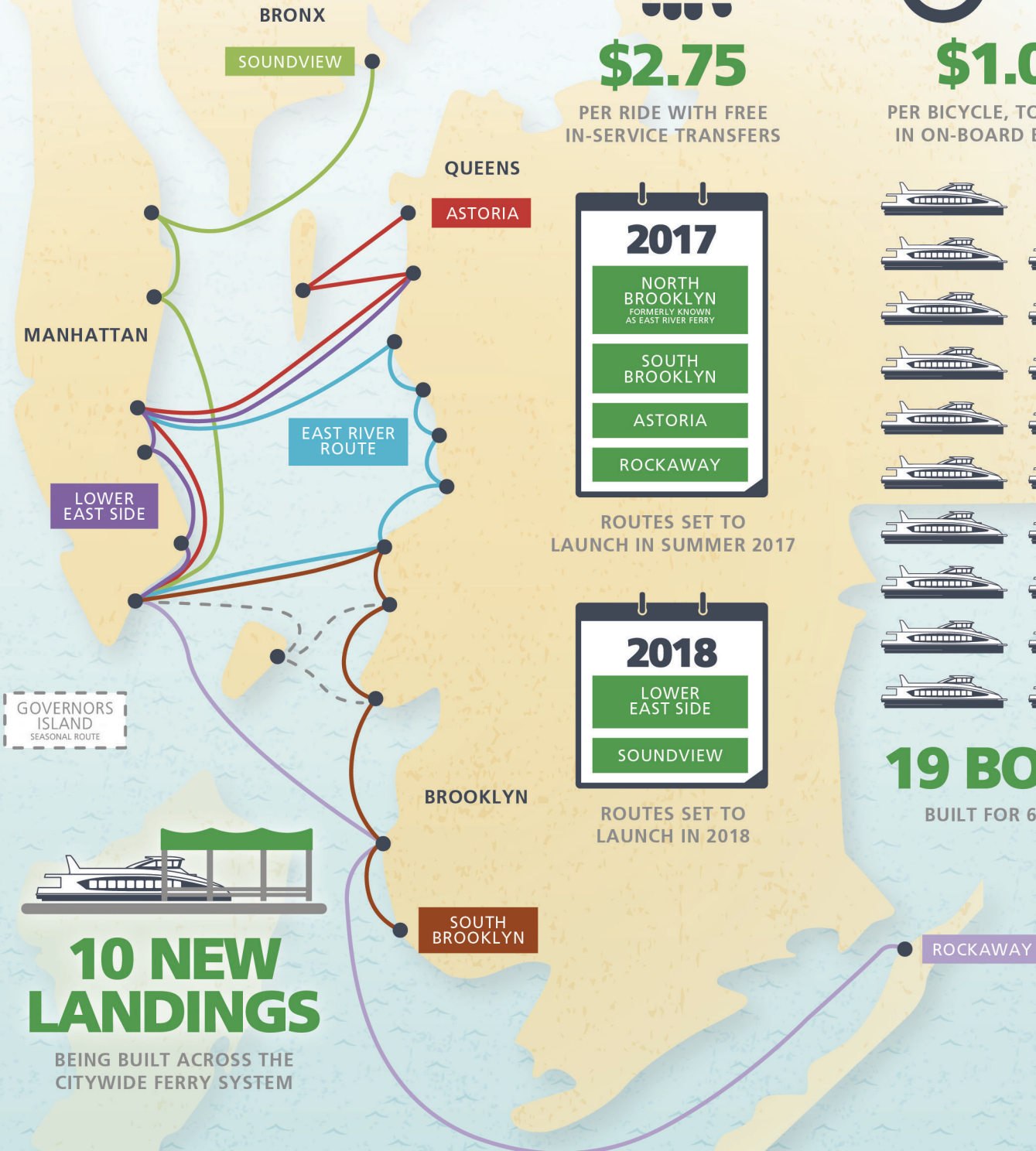
- LOWER EAST SIDE
- SOUNDVIEW

ROUTES SET TO  
LAUNCH IN 2018



**19 BOATS**

BUILT FOR 6 ROUTES

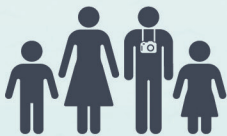
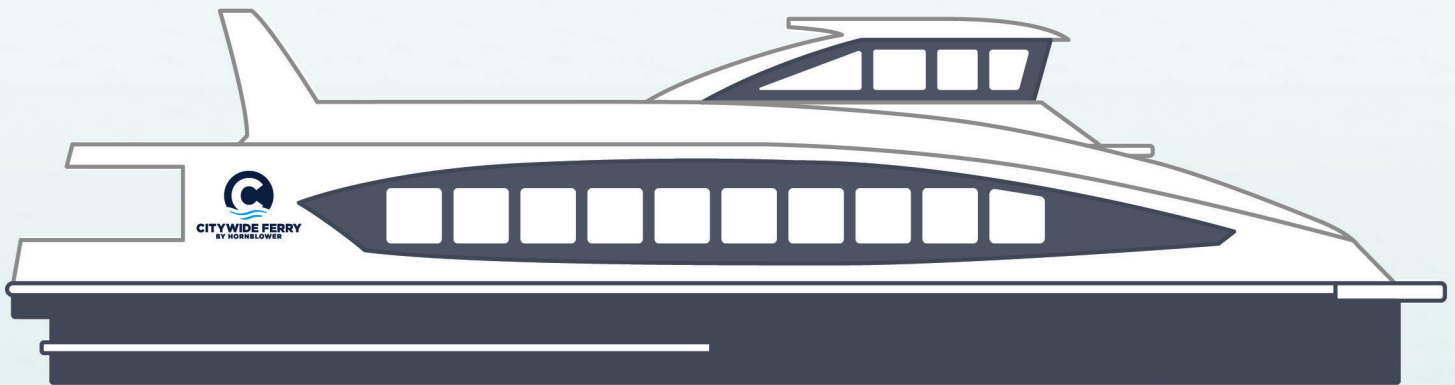
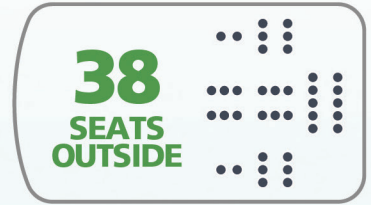


**10 NEW  
LANDINGS**

BEING BUILT ACROSS THE  
CITYWIDE FERRY SYSTEM

\* Information presented subject to change.

# CITYWIDE FERRY VESSEL FACTS



**4.6**  
**MILLION**  
PEOPLE TO RIDE  
THE FERRY EACH YEAR



**CONCESSIONS**  
**ON-BOARD**  
ALL BOATS PROVIDE  
CONCESSIONS ON-BOARD



**BABY CHANGING**  
**STATIONS**  
ALL BOATS FEATURE  
BABY CHANGING STATIONS



**CHARGING**  
**STATIONS**  
ALL BOATS EQUIPPED  
WITH CHARGING STATIONS



ALL BOATS  
EQUIPPED WITH  
COMPLIMENTARY WIFI

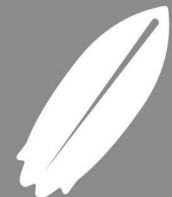
\*IMPLEMENTATION MAY VARY BY ROUTE



ALL BOATS ARE  
ADA ACCESSIBLE



ALL BOATS FEATURE  
STROLLER SPACE



ROCKAWAY ROUTE  
BOATS INCLUDE  
SURFBOARD RACKS

\* Information presented subject to change